

Bertie County - Tall Glass of Water (TGOW) Phase I Development

Description

Referred to locally as "Tall Glass of Water" (TGOW)" until a name and logo have been selected, the site's most stunning feature is its 2,200 linear feet of sand beach and shallow calm waters overlooked by impressive high cliffs on the Albemarle Sound where the Chowan River begins.



The recreational facilities for Phase I of the TGOW project were selected to meet the expressed needs of the community – open access to the water and close-to-home outdoor recreation activities that both young and old can enjoy. A key element of Phase I is an ADA-accessible ramp and walkway from the parking area to the beach. Connected to the walkway at the upper level will be solar-powered restrooms, outdoor showers, and a picnic shelter fitting up to 6 family-sized picnic tables. A kayak kiosk at the beach will house the Bertie County Parks and Recreation kayaks and life preservers. Upon completion of the walkway, clean up along the shore is necessary to complete the public swim beach. Two of seven miles of hiking trail are to be completed in Phase I. The meandering trail loop will explore meadows, forest area, and stream beds. Part of the loop will include an overlook along the cliffs. Primitive campsites with picnic tables and steel fire rings will be provided on naturally flat and open areas to minimize tree cutting. To transform the farmed fields, Phase I will also include several acres of natural meadow restoration.

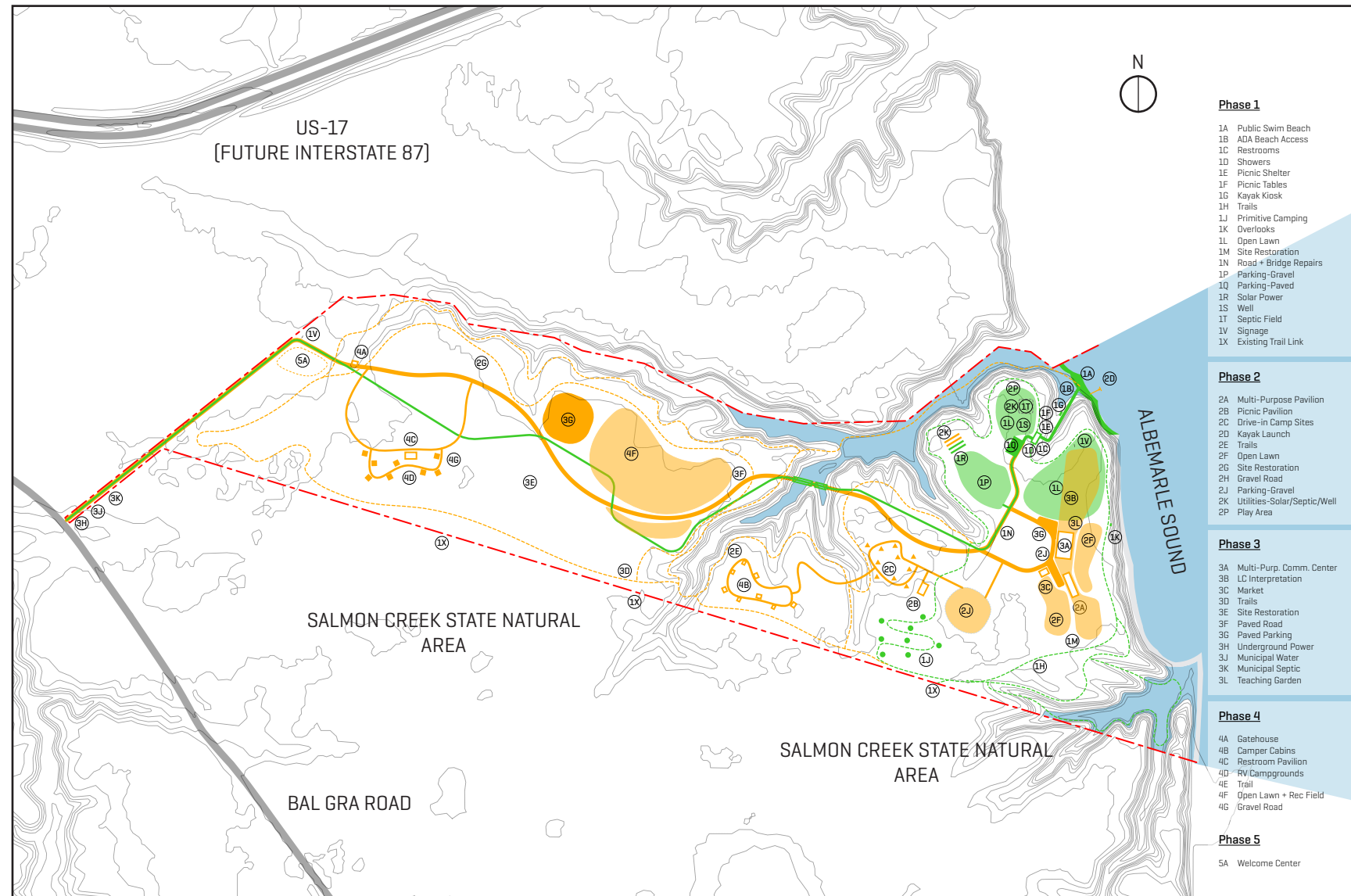
Justification

The Bertie Commissioners' goal for TGOW is three-fold: to provide the people of Bertie with free and open access to the water, and outdoor recreation activities to open new paths towards improved quality of life. These are recorded in [Blueprint for Bertie: A Community Economic Development Plan](#) (2012), the [Bertie County Comprehensive Recreation Plan](#) (2018-2028), and the [CAMA Land Use Plan](#) (adopted in 2016).

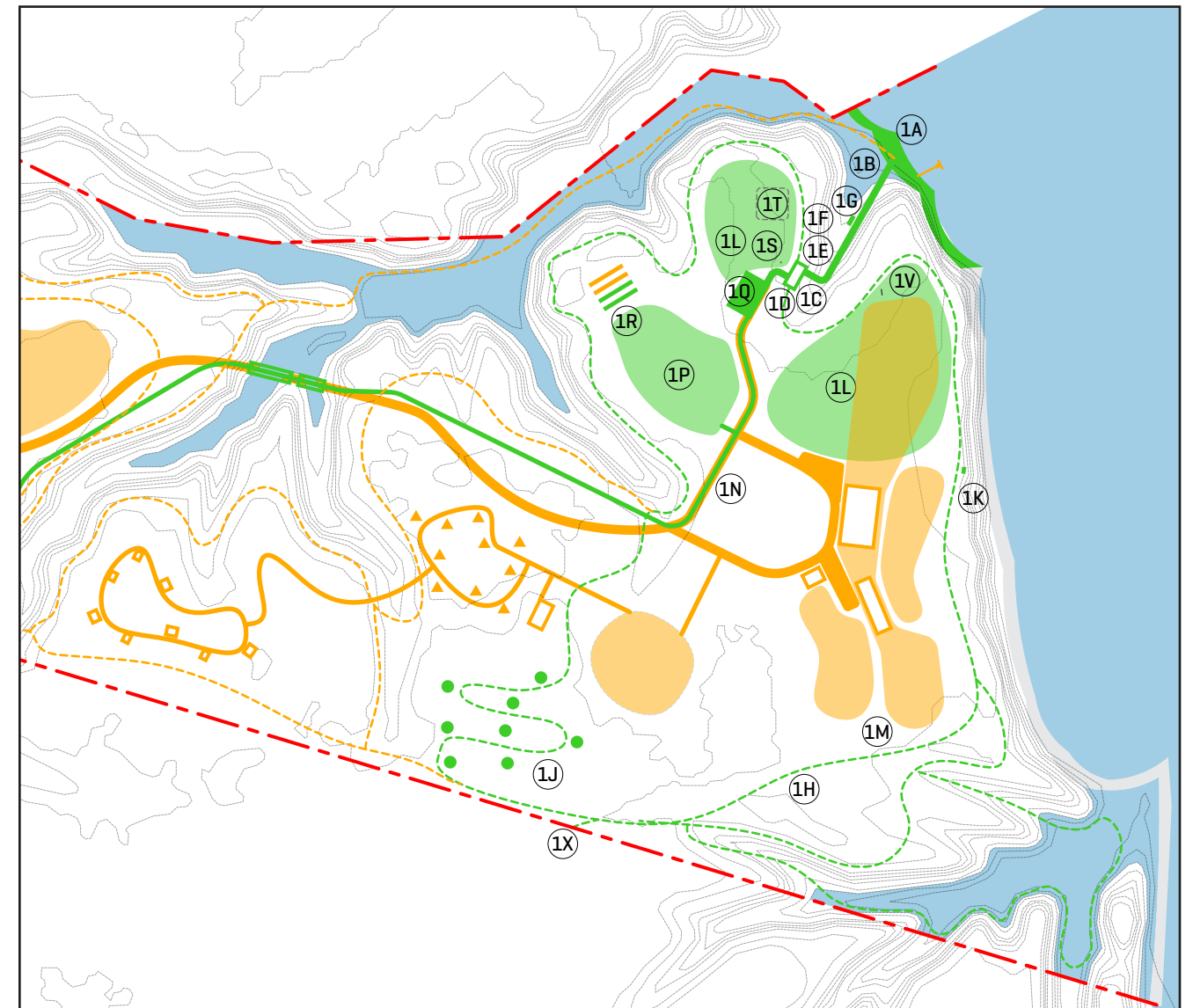
The acquisition of the property was made possible by a 2016 grant from NC PARTF and Bertie County. Bordering the TGOW property are two parcels; a 300-acre and 995-acre tract conveyed by the NC Coastal Land Trust to NC Division of Parks and Recreation, to become the Salmon Creek State Natural Area, further ensuring permanent protection of the significant natural, historical, archaeological and cultural resources that border the Albemarle Sound. See photo at right. Bertie County Commissioners and the TGOW Design Team look forward to offering shared outdoor recreation experiences throughout the entire 1,442 acres. The Board of Commissioners is committed to improving the quality of life for all Bertie County citizens and recognizes the importance of recreational activities to promote health and wellness. Likewise, the governing body supports conserving our natural resources and connecting children to nature, as evidenced by the County's investment in the "Tall Glass of Water" project, by acquiring a 137-acre tract of land, to provide public access to the beach and waterfront recreational opportunities afforded by the pristine waters of the Albemarle Sound.



Most importantly, programming through the lens of social equity to ensure that all people have access to the benefits of local parks and recreational facilities is a top priority for the Bertie County Board of Commissioners.



OVERVIEW MAP



ENLARGED PHASE 1 IMPACT AREA

- Phase 1**
- 1A Public Swim Beach
- 1B ADA Beach Access
- 1C Restrooms
- 1D Showers
- 1E Picnic Shelter
- 1F Picnic Tables
- 1G Kayak Kiosk
- 1H Trails
- 1J Primitive Camping
- 1K Overlooks
- 1L Open Lawn
- 1M Site Restoration
- 1N Road + Bridge Repairs
- 1P Parking-Gravel
- 1Q Parking-Paved
- 1R Solar Power
- 1S Well
- 1T Septic Field
- 1V Signage
- 1X Existing Trail Link

- Phase 2**
- 2A Multi-Purpose Pavilion
- 2B Picnic Pavilion
- 2C Drive-in Camp Sites
- 2D Kayak Launch
- 2E Trails
- 2F Open Lawn
- 2G Site Restoration
- 2H Gravel Road
- 2J Parking-Gravel
- 2K Utilities-Solar/Septic/Well
- 2P Play Area

- Phase 3**
- 3A Multi-Purp. Comm. Center
- 3B LC Interpretation
- 3C Market
- 3D Trails
- 3E Site Restoration
- 3F Paved Road
- 3G Paved Parking
- 3H Underground Power
- 3J Municipal Water
- 3K Municipal Septic
- 3L Teaching Garden

- Phase 4**
- 4A Gatehouse
- 4B Camper Cabins
- 4C Restroom Pavilion
- 4D RV Campgrounds
- 4E Trail
- 4F Open Lawn + Rec Field
- 4G Gravel Road

- Phase 5**
- 5A Welcome Center

LEGEND

- - - - - PARK BOUNDARY - 137 ACRES
- █ PARTF REQUEST
- █ FUTURE FACILITIES
- █ EASEMENTS

PHASE 1 ELEMENTS

- | | | | |
|----------------------|----------------------|--------------------------|------------------------|
| 1A PUBLIC SWIM BEACH | 1F PICNIC TABLES | 1L OPEN LAWN | 1R SOLAR POWER |
| 1B ADA BEACH ACCESS | 1G KAYAK KIOSK | 1M SITE RESTORATION | 1S WELL |
| 1C RESTROOMS | 1H TRAILS | 1N ROAD + BRIDGE REPAIRS | 1T SEPTIC FIELD |
| 1D SHOWERS | 1J PRIMITIVE CAMPING | 1P PARKING-GRAVEL | 1V SIGNAGE |
| 1E PICNIC SHELTER | 1K OVERLOOKS | 1Q PARKING-PAVED | 1X EXISTING TRAIL LINK |

Tall Glass of Water Project - Phase 1

May 2020

Project Elements		Qty	Unit	Unit Cost	Total Item Cost
Cost to Build					
1A	Public Swim Beach	1	LS	\$5,366	\$5,366
1B	ADA Beach Access	1	LS	\$131,612	\$131,612
1C	Restrooms	1	LS	\$136,958	\$136,958
1D	Showers	1	LS	\$8,943	\$8,943
1E	Picnic Shelter	1	LS	\$152,299	\$152,299
1F	Picnic Tables	1	LS	\$3,926	\$3,926
1G	Kayak Kiosk	1	LS	\$15,703	\$15,703
1H	Trails	10,560	LF	\$7	\$77,106
1J	Primitive Camping	8	EACH	\$2,066	\$16,532
1K	Overlooks	1	EACH	\$9,664	\$9,664
1L	Open Fields	1	LS	\$19,855	\$19,855
1M	Site Restoration	0.25	ACRE	\$19,785	\$4,946
1N	Road Repairs	6,500	LF	\$7	\$43,967
1P	Gravel Parking	1,300	SY	\$29	\$37,765
1Q	Paved Parking	556	SY	\$31	\$17,025
1R	Power	1	LS	\$78,513	\$78,513
1S	Well	1	LS	\$17,887	\$17,887
1T	Septic	1	LS	\$17,887	\$17,887
1U	Bridge Repairs	1	LS	\$17,887	\$17,887
1V	Signage	1	LS	\$9,836	\$9,836
Total Cost to Build					\$823,673
Contingencies for the Cost of Building					5%
					\$41,184
Planning and Incidental Costs					20%
					\$164,735
Total PARTF Project Cost					\$1,029,591
Total PARTF Grant Request					\$500,000
Total Local Match					\$529,591

Bertie County

Matching Funds for
PARTF 2019-20 Application

TGOW Project

Type of Matching Funds	Amount of Funds	Funding Source	Availability
Cash	\$57,591	County Budget & CIP	County's Approved CIP
State Grants	\$150,000	NC USDA	Application pending Approval by 8/1/20
	\$175,000	NC Trails	Application pending Approval by 1/21
	\$147,000	CAMA	Application pending Approval by 11/20
Total Matching Funds	\$529,591		